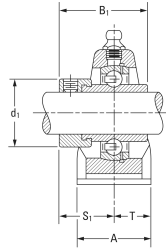
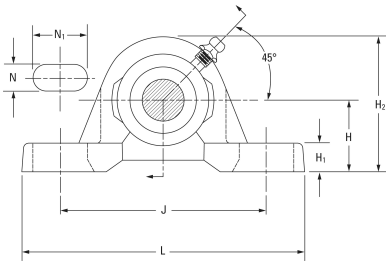




NTA BEARING PRECISION AXLE CORP.



timken TAK 1 15/16 Ball Bearing Housed Units- Fafnir® Pillow Block Units Eccentric Locking Collar

Bearing No. TAK 1 15/16

TAK 1 15/16 Bearing 2D drawings and 3D CAD models

| | |
|------------------------------|----------------------------------|
| Shaft Size d | 1 15/16 in |
| Bearing Type | Ball Bearing |
| Inside Ring Outside Diameter | 0.720 in |
| Dimension T | 1.142 in |
| Series | Industrial |
| Weight | 8.841 lb |
| Seal Type | Tri-Ply Seal |
| Housing Style | Two-Bolt Pillow Block |
| Base to Center Height H | 55.56 mm |
| Total Length L | 200.00 mm |
| Total Width A | 2.280 in |
| Bolt Hole Spacing J | 158.00 mm |
| Bolt Hole Width N | 18.3 mm |
| Bolt Hole Length N1 | 25.40 mm |
| Foot Height H1 | 17.7 mm |
| Total Height H2 | 112.7 mm |
| Dimension L1 | 66.7 mm |
| Inside Ring Width B | =Bearings1_Inside Ring Width= mm |
| Center of Bearing from End S | 24.6 mm |
| Dimension B1 | 2.469 in |
| Static Load Rating | 5210 lbf |
| Dynamic Load Rating | 8740 lbf |