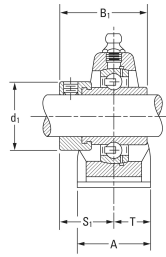
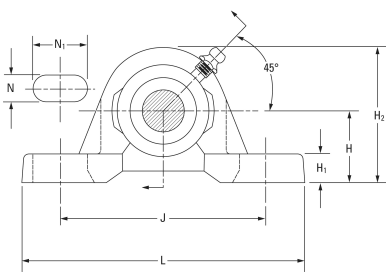




NTA BEARING PRECISION AXLE CORP.



timken TAS 1 1/2 Ball Bearing Housed Units- Fafnir® Pillow Block Units Eccentric Locking Collar

Bearing No. TAS 1 1/2

TAS 1 1/2 Bearing 2D drawings and 3D CAD models

Shaft Size d	1 1/2 in
Bearing Type	Ball Bearing
Inside Ring Outside Diameter	0.720 in
Dimension T	1.016 in
Series	Industrial
Weight	5.490 lb
Seal Type	Tri-Ply Seal
Housing Style	Two-Bolt Pillow Block
Base to Center Height H	49.21 mm
Total Length L	179.4 mm
Total Width A	2.031 in
Bolt Hole Spacing J	136.5 mm
Bolt Hole Width N	14.3 mm
Bolt Hole Length N1	26.2 mm
Foot Height H1	19.1 mm
Total Height H2	101.6 mm
Dimension L1	59.8 mm
Inside Ring Width B	=Bearings1_Inside Ring Width= mm
Center of Bearing from End S	21.5 mm
Dimension B1	2.220 in
Static Load Rating	4460 lbf
Dynamic Load Rating	8130 lbf