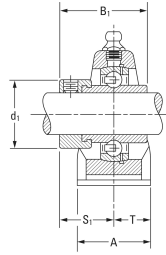
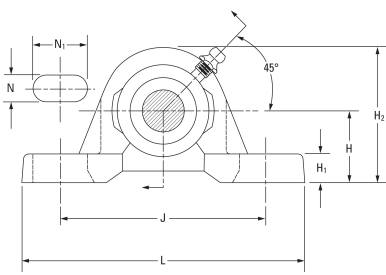




# NTA BEARING PRECISION AXLE CORP.



## timken LAS 1 15/16 Ball Bearing Housed Units- Fafnir® Pillow Block Units Eccentric Locking Collar

Bearing No. LAS 1 15/16

LAS 1 15/16 Bearing 2D drawings and 3D CAD models

Shaft Size d	1 15/16 in
Bearing Type	Ball Bearing
Inside Ring Outside Diameter	0.720 in
Dimension T	1.142 in
Series	Industrial
Weight	8.841 lb
Seal Type	Labyrinth Seal
Housing Style	Two-Bolt Pillow Block
Base to Center Height H	57.15 mm
Total Length L	200.00 mm
Total Width A	2.280 in
Bolt Hole Spacing J	158.00 mm
Bolt Hole Width N	18.3 mm
Bolt Hole Length N1	25.40 mm
Foot Height H1	19.1 mm
Total Height H2	114.3 mm
Dimension L1	66.7 mm
Inside Ring Width B	=Bearings1_Inside Ring Width= mm
Center of Bearing from End S	24.6 mm
Dimension B1	2.469 in
Static Load Rating	5210 lbf
Dynamic Load Rating	8740 lbf