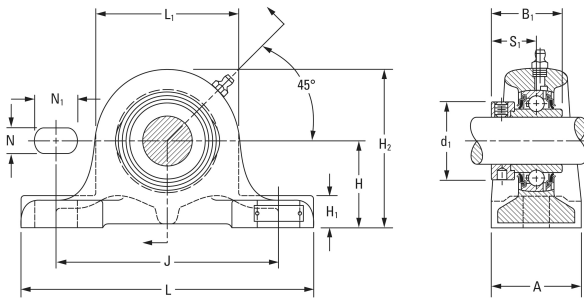




NTA BEARING PRECISION AXLE CORP.

RSA, LSA Industrial Series

timken RSA 2 15/16 Ball Bearing Housed Units-
Fafnir® Pillow Block Units Eccentric Locking
Collar



Bearing No. RSA 2 15/16

RSA 2 15/16 Bearing 2D drawings and 3D CAD models

| | |
|------------------------------|----------------------------------|
| Shaft Size d | 2 15/16 in |
| Bearing Type | Ball Bearing |
| Inside Ring Outside Diameter | 0.937 in |
| Dimension T | 1.752 in |
| Series | Industrial |
| Weight | 23.552 lb |
| Seal Type | Shroud Seal |
| Housing Style | Two-Bolt Pillow Block |
| Base to Center Height H | 95.25 mm |
| Total Length L | 320.7 mm |
| Total Width A | 3.5000 in |
| Bolt Hole Spacing J | 206.4 mm |
| Bolt Hole Width N | 22.2 mm |
| Bolt Hole Length N1 | 31.8 mm |
| Foot Height H1 | 38.1 mm |
| Total Height H2 | 177.80 mm |
| Dimension L1 | 106.9 mm |
| Inside Ring Width B | =Bearings1_Inside Ring Width= mm |
| Center of Bearing from End S | 37.3 mm |
| Dimension B1 | 3.626 in |
| Static Load Rating | 10100 lbf |
| Dynamic Load Rating | 15500 lbf |